

# A HELMET THAT WILL ASPIRE YOU

WH20 ASPIRE welding helmet, quality at an exceptional costs.

## WH20 ASPIRE\*

- 110x90mm cartridge size, 97x42mm viewing area
- Shade range 9-13
- Shade selection, sensitivity and delay adjustment
- Total weight 510g (ADF included)



**JACKSON**<sup>®</sup>  
SAFETY Brand

EXTERNAL  
ADF OPTION

HANDS FREE

LIGHT WEIGHT




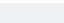

> 50 Amp

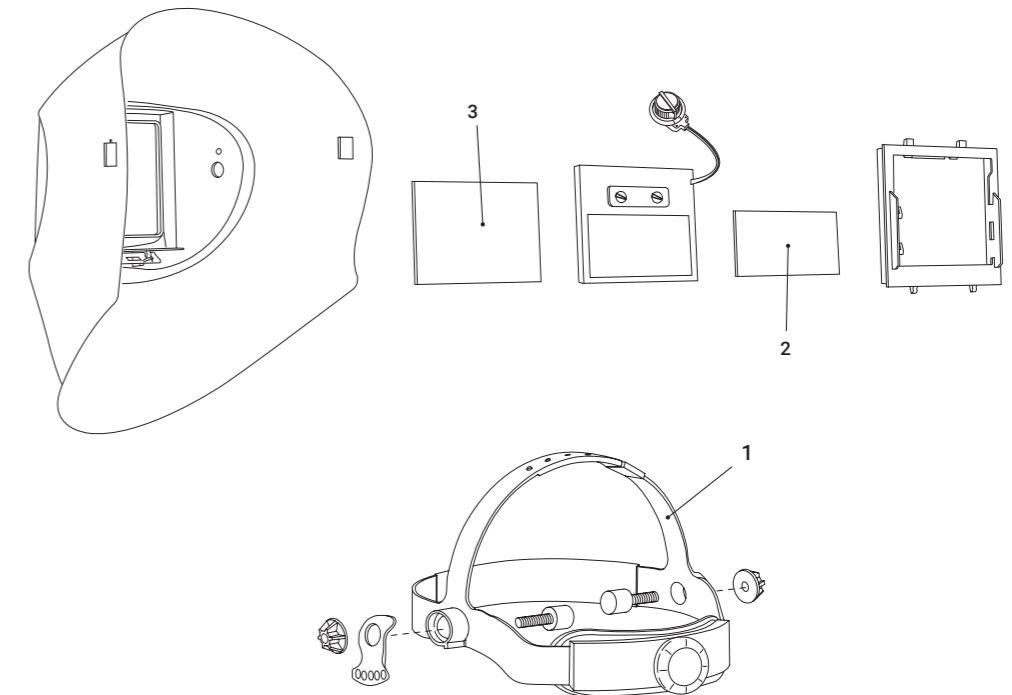


### TECHNICAL DATA

WH20 ASPIRE ES	
Filter Lens	J8049
Viewing Area	100 x 40.5mm
Hard Hat Option	no
Weight	495g
Closed State Shade	4
Shade Adjustment	yes / external
Sensitivity Adjustment	yes / internal
Delay Adjustment	yes / internal
Grinding Mode	no
Switching Time	0.3ms
Energy Supply	solar cells / no battery change

### ORDERING INFORMATION

WH20 ASPIRE WELDING HELMETS			
Code			Case Content
J8049	WH20 ASPIRE WF20 4/9-13 EXT black		6
SPARE PARTS & ACCESSORIES			
Code		Img	Case Content
J8370	Head gear with sweatband		1
J8319	Outer lens 115 X 104 mm		100
J8302	Inner lens 107 x 51 mm		100



A  
**SureWerx**<sup>™</sup>  
Brand

**JACKSON**<sup>®</sup>  
SAFETY Brand

**BALDER**<sup>®</sup>  
TECHNOLOGY

**CURV-0-MARK**<sup>®</sup>