

PRODUCT DATA SHEET

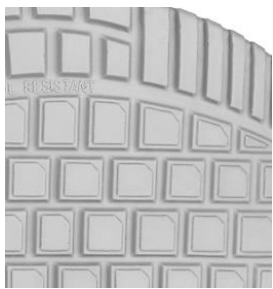
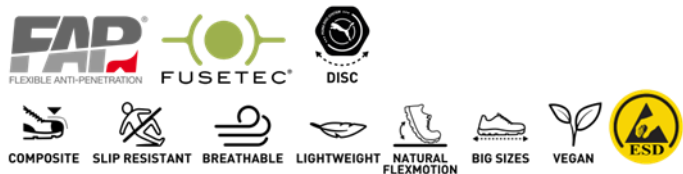


FUSE TC GREEN DISC LOW S1P ESD SRC

Art. No. 64.421.1



- rotection:** fiberglass toe cap and flexible FAP® midsole
- Plus:** FUSE.TEC® technology, ESD, toe cap protection, PUMA DISC lacing system
- Upper:** durable microfiber with breathable Sandwich Mesh
- Lining:** BreathActive functional lining
- Footbed:** evercushion® CUSTOM FIT MID
- Sole:** double density PU sole naturalFLEXMOTION® with iCELLelement, very flexible, extreme cushioning and slip resistant
- Colour:** black green
- Sizes:** 40 - 49



naturalFLEXMOTION®

The double density PU sole consists of an enormous soft and cushioning PU midsole and a very flexible PU outsole. The wafer profile provides extra support on industrial floors, is easy to clean and offers firstclass „LadderGrip“.



iCELL

The hard-wearing honeycomb structure of the iCell element improves the cushioning while enhancing the shoe's stability, guidance and comfort.

DISC

The original disc lacing system and for its 30th anniversary now also available in PUMA safety shoes. What differs from other systems is that turning the disc to the right will lace up the shoe, turning it half to the left will open the fastener again. So easy, so effective. The PUMA Disc can also be optimally operated with gloves.



FUSE.TEC®

Reinforcement elements are seamlessly welded using FUSE.TEC®. Therefore it is possible to work without seams in areas subject to high stress (flex zones). The shoe is more flexible, resistant and has a perfect fit.